

Ultra Marine  
Ultra Safe Anchoring

**BOYUT Mechanical Industry Co. Ltd.**  
Davutpasa C. Gurun S. Basoglu San. Sit. No:17 34010  
ISTANBUL / TÜRKİYE

E-mail: [info@ultramarine.com.tr](mailto:info@ultramarine.com.tr)  
Tel.: +90(212) 482 41 61  
[www.ultramarine.com.tr](http://www.ultramarine.com.tr)

## ULTRA Flip Swivel USER's GUIDE

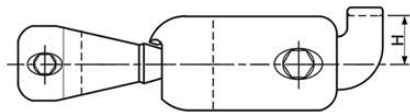
# Ultra Safe Anchoring



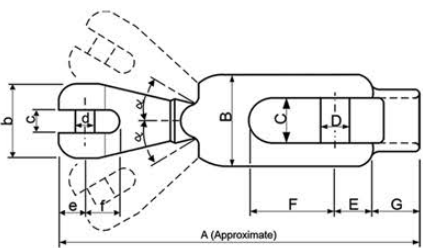
The most advanced anchor swivel.

# ULTRA Flip Swivel Selection Table

Side View



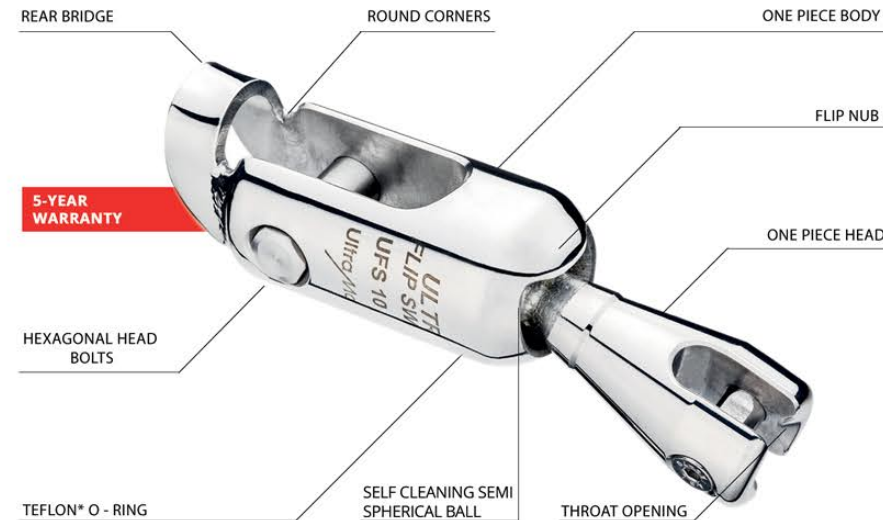
Top View



\* Tested by RINA ( except UFS32 - 360)  
 - Safe Working Loads = .5 x Breaking Load.  
 - Ultra Flip Swivel selection should be based on maximum anchor weight.  
 - Ultra Flip Swivels will accommodate the next size smaller chain, therefore one size larger should be selected for chain such as Grade 70 (G7).  
 - Custom Ultra swivels can be manufactured to accommodate smaller chain.  
 - When choosing this option, the swivel must be a minimum of 30% stronger than the chain connected and anchor measurements fit the anchor shank.  
 - Custom swivels can also be made for symmetrical stockless anchors.

TYPE #	CHAIN DIAMETER	WHOLE LENGTH APPROX. A	CHAIN END DIMENSIONS b - c - d - e - f	ANCHOR END DIMENSIONS B - C - D - E - F	BRIDGE DIMS. G - H	BREAKING LOAD	MAXIMUM ANCHOR WEIGHT
	mm	inches	inches	inches	inches	kN	lbf
UFS 6 - 12	6	1/4"	4.76	0.98x0.3x0.28x0.35x0.43	1.38x0.63x0.43x0.52x1.22	0.55x0.67	38.4 8640
UFS 8 - 21	6	1/4"	5.81	1.18x0.37x0.35x0.43x0.57	1.57x0.75x0.51x0.63x1.44	0.73x0.79	56.7 12740
	8	5/16"					
UFS 10 - 35	8	5/16"	6.61	1.38x0.46x0.43x0.51x0.67	1.77x0.83x0.57x0.71x1.57	0.83x0.89	90.7 20400
	10	3/8"					
UFS 13 - 60	10	3/8"	8.33	1.77x0.60x0.57x0.65x0.91	2.17x1.02x0.71x0.91x2.03	1.04x1.18	160.9 36200
	12	1/2"					
	13	1/2"					
UFS 16 - 100	13	1/2"	9.84	2.09x0.72x0.71x0.79x1.06	2.56x1.22x0.87x1.06x2.32	1.30x1.42	236.5 53200
	14	5/8"					
	16	5/8"					
UFS 20 - 160	16	5/8"	12.17	2.56x0.91x0.87x1.02x1.34	3.35x1.57x1.02x1.26x2.83	1.57x1.59	321.5 72300
	18	3/4"					
UFS 26 - 250	20	3/4"	14.33	3.35x1.18x1.02x1.30x1.69	4.33x2.05x1.26x1.57x3.03	1.89x2.20	474.8 106700
	23	1"					
	26	1"					
UFS 32 - 360	26	1"	18.70	4.33x1.50x1.26x1.69x2.17	5.51x2.60x1.57x2.05x3.90	2.68x2.36	~726 ~163047
	30	1 1/4"					
	32	1 1/4"					

# ULTRA Flip Swivel User's Guide



Congratulations on your purchase of an ULTRA Flip Swivel.

- Swivels are anchor chain connectors – connecting the chain at one end of the swivel and the anchor at the other.
- The ULTRA Flip Swivel's design is unique from most other anchor swivels in that its breaking load is higher than its connected chain.
- The ULTRA Flip Swivel's other difference from most other anchor swivels is that its pins cannot unwind over time like standard shackle pins. Thanks to the special form of ULTRA pin heads and sockets, the force exerted onto the swivel pins by the anchor and chain at both ends of the swivel cannot loosen the pins at all. Together with the retaining setscrews, which hold the pins in place, as no movement is possible to the pin itself, the setscrews themselves will not unwind over time.
- Another significant difference and feature of the ULTRA Flip Swivel is that if the anchor comes upside down on the bow roller, the design forces it to rotate into its correct orientation. (Note: This function is impossible for ULTRA Swivels to suit 300kg – 500kg, stockless anchors).

## Selecting Criteria :

- ULTRA Flip Swivels are selected in two steps.

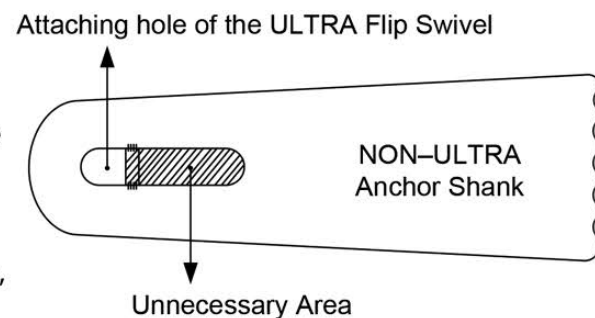
At first, the appropriate size swivel for the anchor is chosen from the selection table. The selected swivel's maximum anchor weight limitation has to be equal to or higher than the anchor weight it is about to be connected to.

In the second step, the swivel is checked to make sure it can be connected to the intended chain and has a higher breaking load than the chain itself.

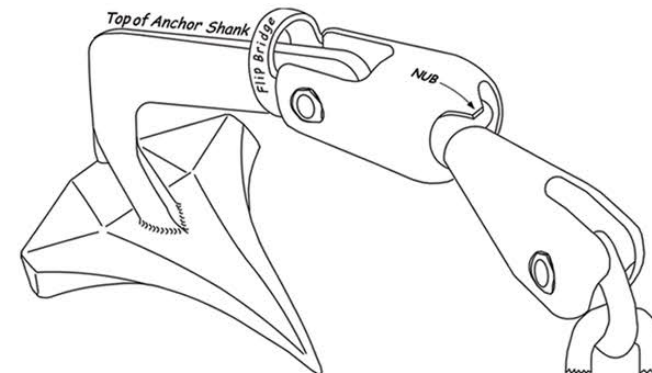
- If you will use your ULTRA Flip Swivel with a higher grade chain, it is better to select the ULTRA Flip Swivel that is one size bigger than the chain you are connecting it to. For instance: If you have an Ø8 mm higher grade chain, instead of UFS 8 - 21 ULTRA Flip Swivel, you should choose UFS 10 - 35 ULTRA Flip Swivel. The chain pins of ULTRA Flip Swivels are designed to accept one size smaller chain. You can see them from the selection table.

- If you intend to use an ULTRA Flip Swivel with a stockless anchor, you do not require a rear bridge and flipping nub as featured on a standard ULTRA Flip Swivel. This non-standard detail needs to be noted when the order is placed. Alternatively, if the stockless anchor is large (300-500 Kg), we recommend installing the World's first roller bearing swivel - the ULTRA Roller Bearing Swivel.

- Connecting the ULTRA Flip Swivel to a non-ULTRA Anchor :  
It's important to remember that most traditional anchor have slots instead of holes on their shanks. This is because historically U (or D) locks were used before the development of swivels. The technical specifications of the ULTRA Flip Swivel result in a much safer and secure connection than the same group's U (or D) locks. However, when using the ULTRA Flip Swivel with an anchor connected through a slot on rare occasions you might find the swivel locked in an undesirable position due to movements in the slot. To ensure this rare situation never occurs, you should block the unnecessary emptiness in the slot with a small modification.



## Fitting (Installation) Considerations :



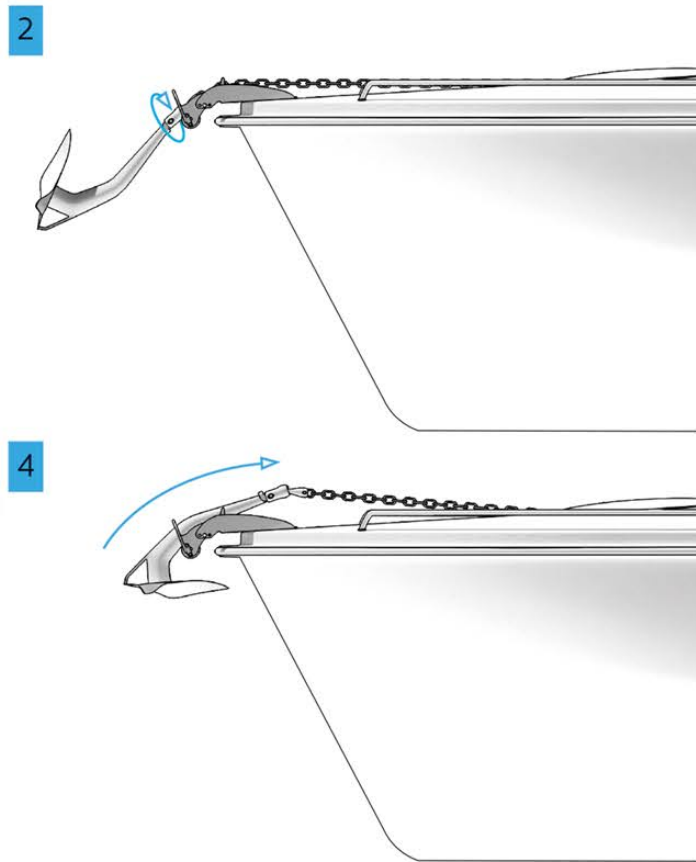
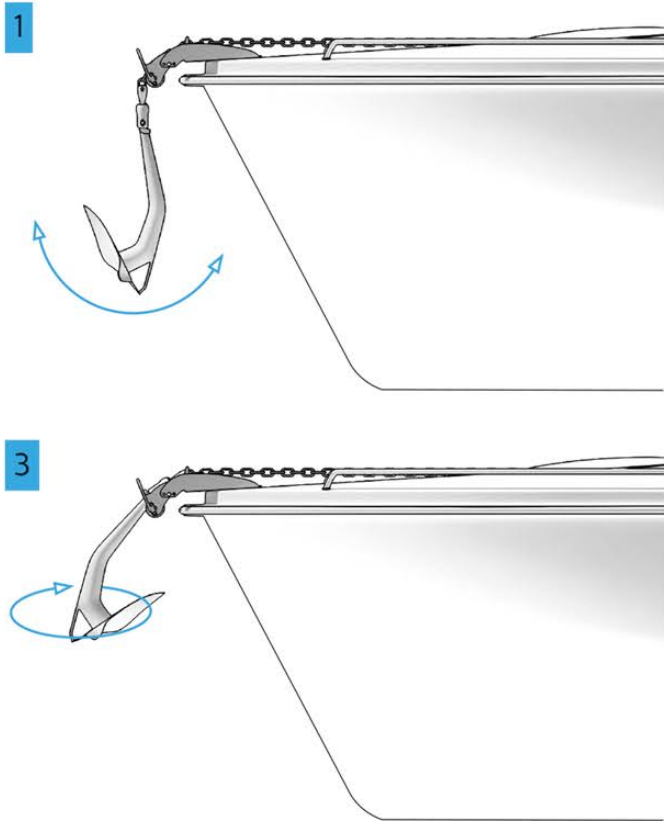
- Installation involves inserting the pins and setscrews on the small end/throat of the Ultra Flip Swivel through the chain and vice versa on the large end/throat through the anchor eye.

- When the anchor eye is inserted into the large end/throat of the ULTRA Flip Swivel, the correct orientation is for the rear bridge to marry to the top of the anchor shank (or, in other words, the inverted "U" shape of the rear bridge needs to be in line with the top of the anchor shank). The ULTRA Flip Swivel **MUST** be orientated this way to function correctly and permit the anchor to flip into the proper position/orientation on your bow roller. Refer to the attached image as a further reference regarding this important installation instruction. (See drawing)

- While inserting the chain into the small end/throat of the Ultra Flip Swivel, the pin **MUST** be inserted parallel to the Main Axis. Refer attached image as a further reference regarding this important installation instruction. The pins and setscrews of small ULTRA Flip Swivels (particularly UFS 6 - 12 & UFS 8 - 21) should not be forced as this can cause damage/wear, which may cause problems when you want to remove the ULTRA Flip Swivel from the ground tackle. When installed correctly, ULTRA Flip Swivel pins and setscrews are not affected by anchor and chain movements - they don't unwind over time. Apply normal force when tightening the setscrews. For extra safety, use Loctite on the retaining setscrews.

- It may be better to heat your ULTRA Flip Swivel setscrews before removing them if you have used Loctite when initially installed.

## How ULTRA Flip Swivel Works ?



4

## ULTRA Flip Swivel - Normal Performance :

- The windlass operator is not required to do anything special for the ULTRA Flip Swivel to perform its role. If you witness an unexpected action, it should be investigated. For instance, if your anchor is recovered onto the bow roller in an upside-down orientation, these are the potential reasons ;

- Avoid too fast recovery speed and damage to the swivel :

Generally, it is desired to recover anchor quickly. However, this may not let the swivel turn the anchor the right way up. In this case, wait for 1 second as the anchor touches the bow roller, at which time, if the anchor is upside-down, the ULTRA Flip Swivel will commence to rotate the anchor.

- Narrow Rollers: The sides of the roller might block the anchor when it is about to turn the right way up.

- Chain channels in the rollers: Channel sides block the anchor, and it does not let it flip.

## ULTRA Flip Swivel - Fixing Hook / Safety Lanyard :

- After the anchor is recovered, attaching a safety lanyard is recommended to ensure the anchor cannot deploy unintentionally. The safety lanyard can be attached to the ULTRA Flip Swivel's void between its body and anchor. Refer attached image as a further reference regarding this point. The safety lanyard should be firmly fastened to a cleat or strong end on the foredeck.



## Maintenance :

- ULTRA Flip Swivels are designed to work for many years without maintenance. However, given its importance within your anchoring system and for the safety of the vessel and its crew, we recommend as below.

- Your ULTRA Flip Swivel needs to be inspected visually at least once yearly (and more often if the anchor is in constant use). Look to see that the setscrews are still tight and the pins firmly in their rebated sockets.

- If minerals cover the ball joint, water-resistant lithium-based grease relaxes its functionality.

5

- It is normal to see scars on the neck of your ULTRA Flip Swivel made by the flipping nub. These scars occur when the nub forces the anchor to rotate to the proper position/orientation – evidence that your ULTRA Flip Swivel is performing its role. This is only an aesthetic scar. However, these scars shouldn't increase over time. If the surface diameter under the scars is smaller than the diameter where the neck and body combine, the swivel needs to be replaced. Otherwise, the continuation of this situation may cause a swivel failure.

Possible reasons for such a situation :

- Swivel is used with an anchor heavier than its maximum anchor weight limitation; in other words, it uses a smaller swivel than the recommended one.

- Smaller swivel is used with a higher grade chain with a higher breaking load than the swivel. In this case, as the small swivel will work together with higher loads, it will have excessive wear. You must select a swivel with a higher breaking load than the chain connection.

- Too narrow rollers block the anchor from the sides and do not let the anchor turn the right way up on the bow roller.

- Rollers have special chain channels. These channels can block the anchor from the sides once it is about to turn the right way up. They have more disadvantages than their advantages.

- Using too fast recovery speed. It does not give enough time to turn the right way up on the bow roller and forces the swivel extremely. To not let this happen, wait for 1 second as the anchor touches the bow roller. After the anchor turns slowly, you can recover it without forcing the swivel.

IMPORTANT NOTES :

- You have to pay attention to all the above warnings. Otherwise, you might endanger your life and boat in time. For such the manufacturer and sellers of the ULTRA Flip Swivel are excluded from liability.

- Once the above warnings are not considered, ULTRA Flip Swivel is void of warranty.

## Corrosions :

- Possible corrosion of the first couple of chain links connected to the ULTRA Flip Swivel: This will only occur when the ULTRA Flip Swivel is used together with galvanized chain. The Galvanized layer works as a sacrificial anode against stainless steel and melts. These links without zinc protection will rust in seawater and salt air. Depending on how often you use your anchor, this scenario can occur between 1 to 3 years. Since it doesn't happen suddenly, it doesn't cause an immediate security risk. These rusted links should be cut off the chain at a proper time.

- Connecting the ULTRA Flip Swivel to a non-ULTRA Anchor :

It's important to remember that most traditional anchor have slots instead of holes on their shanks. This is because historically U (or D) locks were used before the development of swivels. The technical specifications of the ULTRA Flip Swivel result in a much safer and secure connection than the same group's U (or D) locks. However, when using the ULTRA Flip Swivel with an anchor connected through a slot on rare occasions you might find the swivel locked in an undesirable position due to movements in the slot. To ensure this rare situation never occurs, you should block the unnecessary emptiness in the slot with a small modification.

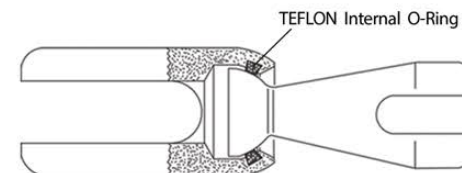
## Pollution :

- Stainless Steel: While your ULTRA Flip Swivel is in use, it can come into contact with foreign metals on the sea floor. This can leave some microscopic particles on your ULTRA Flip Swivel. These particles may then leave rust marks; in some cases, it might appear like the whole swivel is rusted. This is very rare but not impossible. In both cases, rust is only at the surface and doesn't cause any security problems. It can be cleaned with any stainless steel polisher.

- Becoming colorful: While it is in use, swivel can get in touch with some mineral sand mixtures. If we anchor for a long time in such a place, stainless steel can react with it, and it can become colorful. This is also only a surface problem and it doesn't cause any security problems; any stainless steel polisher can clean it. Another similar fouling on the swivel can occur on sea bottoms polluted with diesel fuel. It can easily be cleaned with detergent.

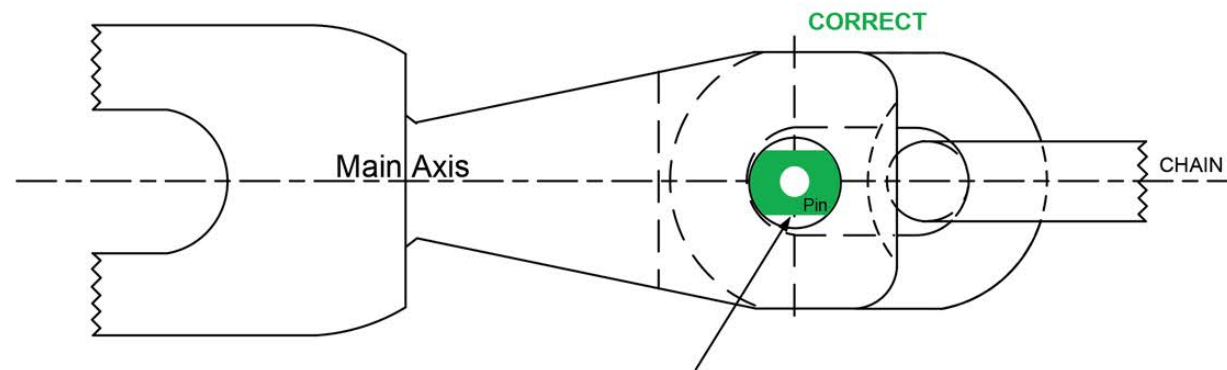
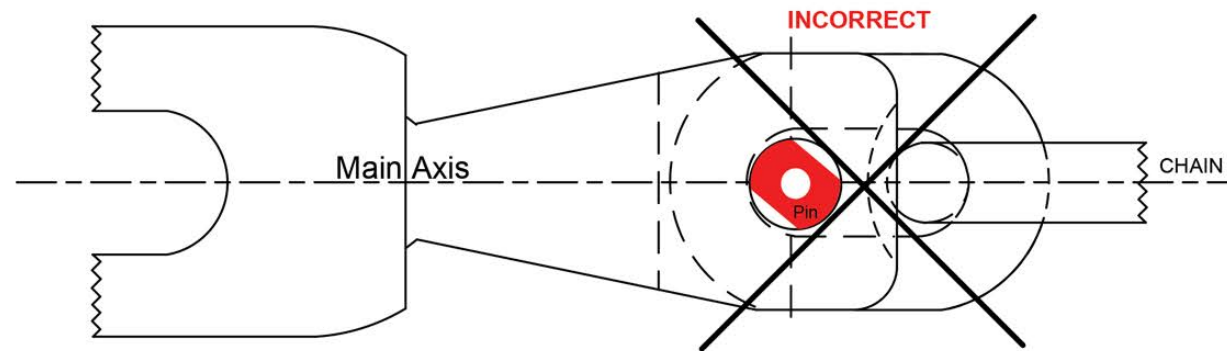
- Surface looking as covered with whitewash: When the swivel is used with a galvanized chain, minerals in seawater can settle on the stainless steel surface, and it may look whitewashed. Any acidic liquid such as lemon water, vinegar or sink opener can easily clean it.

- Stiffness on the ball: The ULTRA Flip Swivel's ball works in conjunction with a TEFLON™ Ring. This ensures that the swivel will function even when extremely dirty. Occasionally applying grease on the ball joint will guarantee better performance. We recommend using water-resistant lithium-based grease in these cases. However, our suggestion is to not use grease in any case on an ULTRA Roller Bearing Swivel.



## ULTRA Flip Swivel Unique Features :

- \* **One Piece Body:** Fabricated (not cast) one piece body ensures maximum strength. It is suitable to be used with most anchor types.
- \* **One Piece Head:** Fabricated (not cast) one piece swivel head (which includes the semi spherical ball) ensures maximum strength.
- \* **Semi Spherical Ball:** Self cleaning and allows 360 degree swivel.
- \* **Hexagonal Head Bolts:** Ensures locking bolt cannot release unintentionally.
- \* **TEFLON™ O-Ring:** Our internal TEFLON™ O-Ring stops metal friction occurring when under load providing low resistance and smooth operation.
- \* **Flip Nub:** If the anchor is recovered up-side down the flip nub will assist the anchor to correctly right itself onto the roller.
- \* **Rounded Corners:** Reduces potential damage when in contact with other surfaces.
- \* **Throat Opening:** The opening is specially suited to the chain size.
- \* **Specifications:** The swivel's connectable max. anchor weight, chain size and breaking strength is recorded on the rear side of the swivel.



Flat surfaces of the pin must be connected parallel to the Main Axis