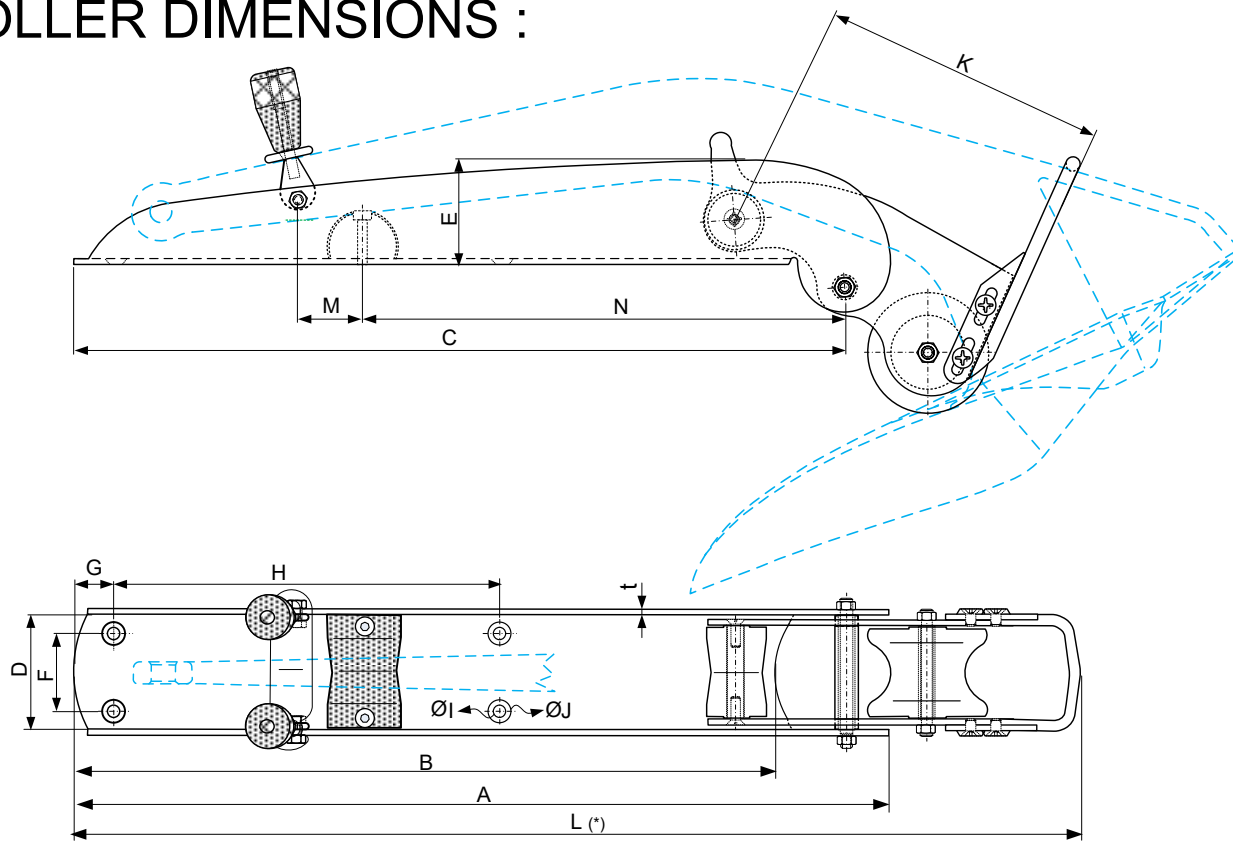


ULTRA BOW ROLLER DIMENSIONS :

May 2019



- Dimensions are in mm.

Anchor kg	5	8	12	16	21	27	35	45	60	80	100	130	160	200
A	396,8	464,0	531,2	584,6	639,8	696,0	759,1	825,0	908,0	994,4	1076,9	1175,0	1259,3	1356,7
B	342,1	400,2	458,2	504,2	551,8	600,3	654,7	711,6	738,2	862,0	938,9	1013,7	1086,1	1170,2
C	374,5	438,0	501,5	551,9	604,0	657,0	716,7	778,7	857,2	943,4	1016,6	1109,5	1188,7	1280,7
D(*)	55,2	64,6	74,0	81,4	89,1	96,9	105,7	114,9	126,4	139,1	149,9	163,6	175,3	188,9
E	50,5	59,1	67,7	74,5	81,5	88,7	96,7	105,1	115,7	127,3	137,2	149,7	160,4	172,8
K	141,1	165,0	188,9	207,9	227,5	247,5	269,9	293,4	322,9	355,4	383,0	417,9	447,8	482,5
L(**)	536	573	656	721	790	859	937	1018	1121	1234	1329	1450	1555	1675
M	31,1	36,4	41,7	45,8	50,2	54,6	59,5	64,7	71,2	78,4	84,5	92,2	98,8	106,4
N	202,4	236,8	271	298,5	326,8	355,2	387,2	420,9	463,4	509,7	549	599,5	642	691,5
t	3,0	4,0	4,0	4,0	5,0	5,0	6,0	6,0	6,0	8,0	8,0	8,0	10,0	10,0

- If dimension "A" or "B" is given together with the order by customer, it can be manufactured in different lengths.

- The bow roller chassis is either manufactured without holes to not let potential problems on mounting and drilled by the customer or it is manufactured with holes, if the dimensions of "F,G,H,I,J" are given together with the order by the customer.

- Dimensions and details might be changed without giving notice.

(*) "D" is the approximate dimension given for the current drawing, shows variety up to an extra 2/3t.

(**) "L" is the approximate dimension given for the current drawing, shows variety with car movements.