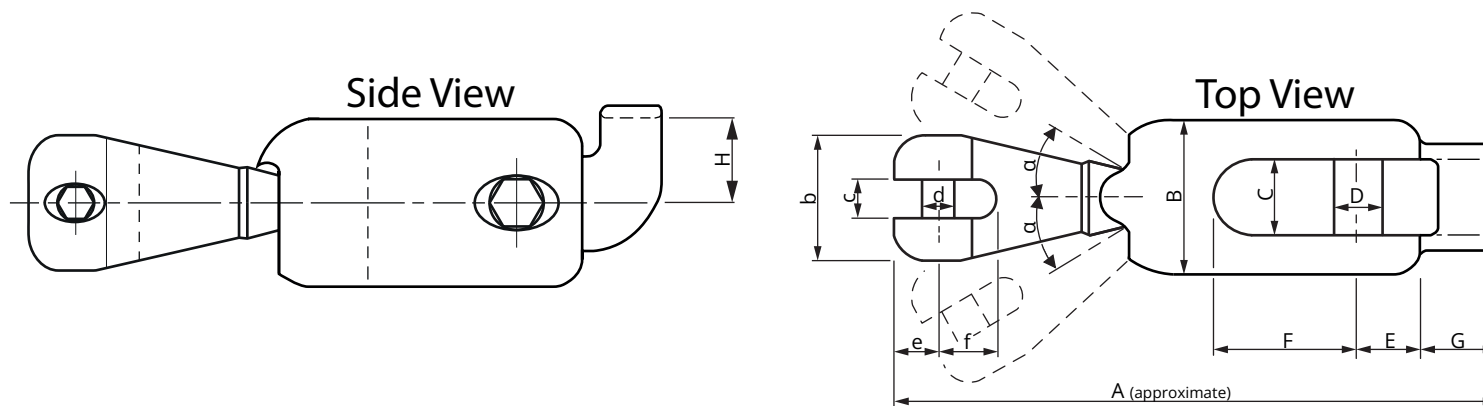


ULTRA Flip Swivel Selection Table

The ULTRA Flip Swivel has been designed to connect the chain to asymmetric anchors such as the ULTRA Anchor.
If you are looking to connect a symmetric anchor (ULTRA Stockless Anchor), please check ULTRA Classic Swivel (UCS).



- UFS selection should be based on the "Max. Anchor Weight". If it's not enough, a bigger UFS must be selected.

- One size bigger UFS can also be used with the same chain. Therefore one size bigger swivel should be selected for chains such as Grade 70 (G7).

- Since the swivel is a component that will wear out, the warranty period is limited to 5 years. However, perform visual wear checks at least once a year, and if there is no severe deformation, corrosion, or loosening, you can continue to use it safely even after the warranty period.

- Tested by Rina (except UFS 32 – 600).
Safe Working Load = 0,5 x Breaking Load

TYPE	Chain Diameter(*)		Whole Length Approx. A	Chain Side Dimensions b-c-d-e-f	Anchor Side Dimensions B-C-D-E-F	Flip Bridge Dimensions G-H	Breaking Load		Maximum Anchor Weight	
(kg) - (lbs)	(mm)	(inch)	(mm)	(mm)	(mm)	(mm)	(kN)	(lbf)	(kg)	(lbs)
UFS 6-12	6	1/4"	121	25x7,6x7x9x11	35x16x11x13x31	14x17	38,4	8640	12	26
UFS 8-21	6-8	1/4"-5/16"	147,5	30x9,4x9x11x14,5	40x19x13x16x36,5	18,5x20	56,7	12740	21	46
UFS 10-35	8-10	5/16"-3/8"	168	35x11,6x11x13x17	45x21x14,5x18x40	21x22,5	90,7	20400	35	77
UFS 13-60	10-12-13	3/8"-1/2"	211,5	45x15,2x14,5x16,5x23	55x26x18x23x51,5	26,5x30	160,9	36200	60	132
UFS 16-110	12-13-14-16	1/2"-5/8"	250	53x18,2x18x20x27	65x31x22x27x59	33x36	236,5	53200	110	242
UFS 20-200	16-18-20	5/8"-3/4"	309	65x23x22x26x34	85x40x26x32x72	40x40,5	321,5	72300	200	440
UFS 26-360	20-23-26	3/4"-1"	364	85x30x26x33x43	110x52x32x40x77	48x56	474,8	106700	360	793
UFS 32-600	26-30-32	1"-11/4"	475	110x38x32x43x55	140x66x40x52x99	68x60	~726	~163047	600	1320

(*): The diameters provided here are for the standard and one size smaller chains that can normally be connected to the standard Flip Swivel.

If you would like to connect to even smaller chains, there are two options:

1- You can attach a larger link suitable for the standard swivel to the end of your small-sized chain and then make the swivel connection through it

2- You can order a modified swivel. With custom manufacturing, a modified swivel can be made that can directly connect to the desired chain.

Example: the UFS20-200 needs to be connected to a chain of at least Ø16.
If you want to connect directly to a Ø12 chain, you can order the modified swivel coded as UFS 20/12-200.



ULTRAProducts
WEST

We reserve the right to make changes to dimensions and conditions.

This document was updated on the 08.11.2024

For the latest version, please visit www.ultraproductswest.com