






ULTRA Anchor Selection Table

RECOMMENDED ULTRA ANCHOR WEIGHT	SAIL BOAT		POWER BOAT			MULTIHULL		
								
	MONO-HULL		HIGH PROFILE	LOW PROFILE		SAIL	POWER	
	BOAT WEIGHT	BOAT LENGTH	BOAT WEIGHT	BOAT LENGTH	BOAT LENGTH	BOAT WEIGHT	BOAT LENGTH	BOAT LENGTH
	lbs	feet	lbs	feet	feet	lbs	feet	feet
UA 5/11	2 205	17	2 425	17	19	1 543	14	15
UA 8/18	4 410	23	4 850	24	26	3 086	20	21
UA 12/26	8 380	30	9 260	31	33	5 950	26	27
UA 16/35	13 890	35	15 210	36	40	9 920	31	32
UA 21/46	22 490	41	24 690	43	47	16 100	36	38
UA 27/60	32 190	47	35 270	48	53	23 150	41	43
UA 35/77	47 400	52	51 800	54	60	34 400	45	48
UA 45/100	66 140	58	72 530	60	66	47 620	51	53
UA 60/132	94 800	66	103 830	68	74	68 340	58	60
UA 80/176	139 880	73	152 120	75	83	100 100	63	67
UA 100/220	187 000	80	205 000	83	91	134 000	70	73
UA 130/290	271 000	90	298 000	93	102	196 000	78	82
UA 160/350	384 000	100	421 000	103	113	276 000	86	91
UA 200/440	578 000	113	633 000	116	128	419 000	98	103
UA 250/550	882 000	129	966 000	133	146	639 000	111	117
UA 300/660	1 213 000	144	1 323 000	149	163	882 000	125	131
UA 360/800	1 675 000	164	1 830 000	169	186	1 213 000	142	150

CAUTION

- The ULTRA Anchor is designed to handle extremely heavy loads and caution is advised when handling.
- All materials have resistance limits, the use of high powered engines to free an anchor may deform it and/or cause damage to vessel.
- It is recommended to use a trip line or an ULTRA Anchor Ring to recover an anchor stuck under an obstruction.

ULTRA ANCHOR WARRANTY

- Select the largest ULTRA Anchor that will meet both the vessel's weight and length criteria.
- Users may select the next smaller size, depending on the type of anchoring they do and/or cruising area.
- ULTRA Anchors are warranted for lifetime based on these recommendations.

COMMENTS

- When selecting ULTRA Anchors in excess of 100 kg or 220 lbs. please consult Llyods or a comparable certification society. The listed values should be used for preliminary selection only.
- ULTRA Anchors work well as bow and stern anchors on horizontal roller assemblies, they are not suitable for vertical or straight hawse holes.
- It is recommended to use an ULTRA Flip Swivel or other suitably strong stainless steel connector.

Now it's time to change! ➤

ULTRA Anchor

Drop it,
Set it,
Forget it!



200.0 B C



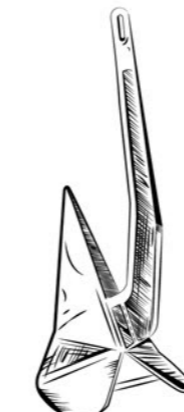
600 AD



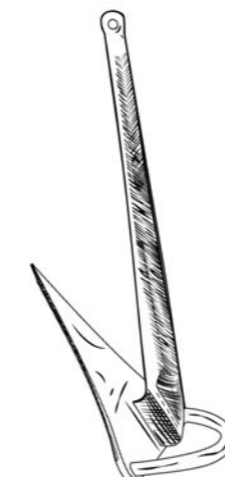
1940's



1970's



1980's



1990's



NOW ULTRA



Western Hemisphere Distributor
ULTRA Products West LLC
3774 SW 30TH AVENUE Fort Lauderdale, FL 33312
USA

E-mail: sales@ultraproductswest.com
Tel.: (954) 928-8101
www.ultraproductswest.com



ULTRA Products

WEST

The Name Says It All.



Designed to Shine!

The first anchor designed to be made out of stainless steel.



ULTRA Anchor

Designed and made in Türkiye, the ULTRA Anchor range is the pinnacle of anchoring technology and design. Completely hand made from 316L - 318LN stainless steel and hand polished, every ULTRA Anchor is designed for excellence.

The ULTRA Anchor demonstrates why a correct weight distribution and design is so important when setting and recovering your anchor. In fact, invert any ULTRA Anchor and it will instantly recover itself into attack position.

Such performance has been achieved with the innovative patented features this anchor displays; including a curved lead filled tip for instant penetration, a hollow shank for optimal weight distribution, concaved base surfaces for maximum holding power, and large side wing plates to avoid release during changing wind or tide conditions. Furthermore, each anchor is easily recoverable with the flat pivot surface on the underside base.

The ULTRA Anchor is suitable for all vessel types and locates securely onto the bow roller. ULTRA Anchor range in size from 5kg / 11lbs to 360kg / 800lbs.

Sourcing Europe's finest materials and fabricated by specialist engineers, the ULTRA Anchor is supplied with a LIFETIME WARRANTY.

We don't compromise on quality or design, nor should you. Protect your investment in style.



Check self - explanatory videos on our website www.ultraproductswest.com

REINFORCED EYE

Even under the most extreme load the shank's reinforced eye will not bend, break or fail.

SERIAL NUMBER

Every ULTRA Anchor is stamped with a unique serial number, ensuring your anchor is always identifiable.

ANCHOR WEIGHT DETAIL

The anchor weight is stamped into the shank and identifies the anchor size in both kg and lbs.

HOLLOW SHANK

Enables weight to be concentrated on the anchor tip.

TUBULAR CONSTRUCTION

Anchor cannot lie on its spine and recovers instantly to the attack position. Anchor will load correctly into the bow roller.

NON CHAIN - FOUL BAR

Often chain can foul around the shank of the anchor, resulting in the anchor not able to set. The clever design features of the non chain-foul bar ensures chain simply cannot wrap around the shank and provides the ability to attach a trip line. It helps easy transport and a continuous anchor geometry on bow rollers.

SIDE WING PLATES

The ULTRA Anchor does not release in a changing wind or tide, it performs a complete 180 degree rotation (while still buried) on its own length and holds firm.

LIFE - TIME WARRANTY

MAX. HOLDING POWER BASE

The concaved base/fluke has the appearance of a shovel and has extreme holding power with a greater surface area than conventional style anchors. The result is more secure, higher holding power anchor that will not release.

CURVED TIP

Importantly, the anchor tip is shaped downwards, ensuring a continuous setting under unfavourable weather conditions. Its angles on the other hand let it help anchor instant set even when the anchor is not at the right attack position.

SCRATCH - CATCH POINT

Prevents dragging and provides instant set when anchor moves.

LEAD FILLED TIP

Lead is inserted into the anchor tip, achieving the optimal weight distribution and ensuring the anchor will penetrate unfavourable bottom conditions.





ULTRA Flip Swivel

The most advanced anchor swivel!

Designed and made in Türkiye, the ULTRA Flip Swivel is a uniquely fabricated anchor swivel, connecting the chain and the anchor without the need of additional shackles. Fabricated from "316Ti" stainless steel and hand polished for stunning presentation on the bow, the ULTRA Flip Swivel is uniquely strong, streamline, and does not require any locking pins or safety wires.

The breaking strength of the swivel is typically higher than the chain it is connected to and allows 30 degree rotation with complete 360 degree swivel. The ULTRA Flip Swivel is fabricated with a unique flipping nub; assisting to recover the anchor right-side up into the bow roller. This flipping nub, combined with the rear bridge and ULTRA Flip Swivel's rotation and complete 360 degree swivel ability, ensures setting and recovering your anchor is an easier and safer task.

Hexagonal head locking bolts prevent the need for additional grub screws to secure the swivel pins, and every ULTRA Flip Swivel has the breaking strength listed on the rear of its one piece body. The best results are taken especially by ULTRA Anchor. This way the best harmony is achieved.

Supplied with a standard five year warranty, the ULTRA Flip Swivel incorporates unique design features and advantages which makes it the world's most advanced anchor swivel.

- They come in three different types as per the user's need.

1 - ULTRA Flip Swivel (UFS)

They are suitable for connecting asymmetric bow anchors. The flipping nub, combined with the rear bridge, assists in recovering right-side up.

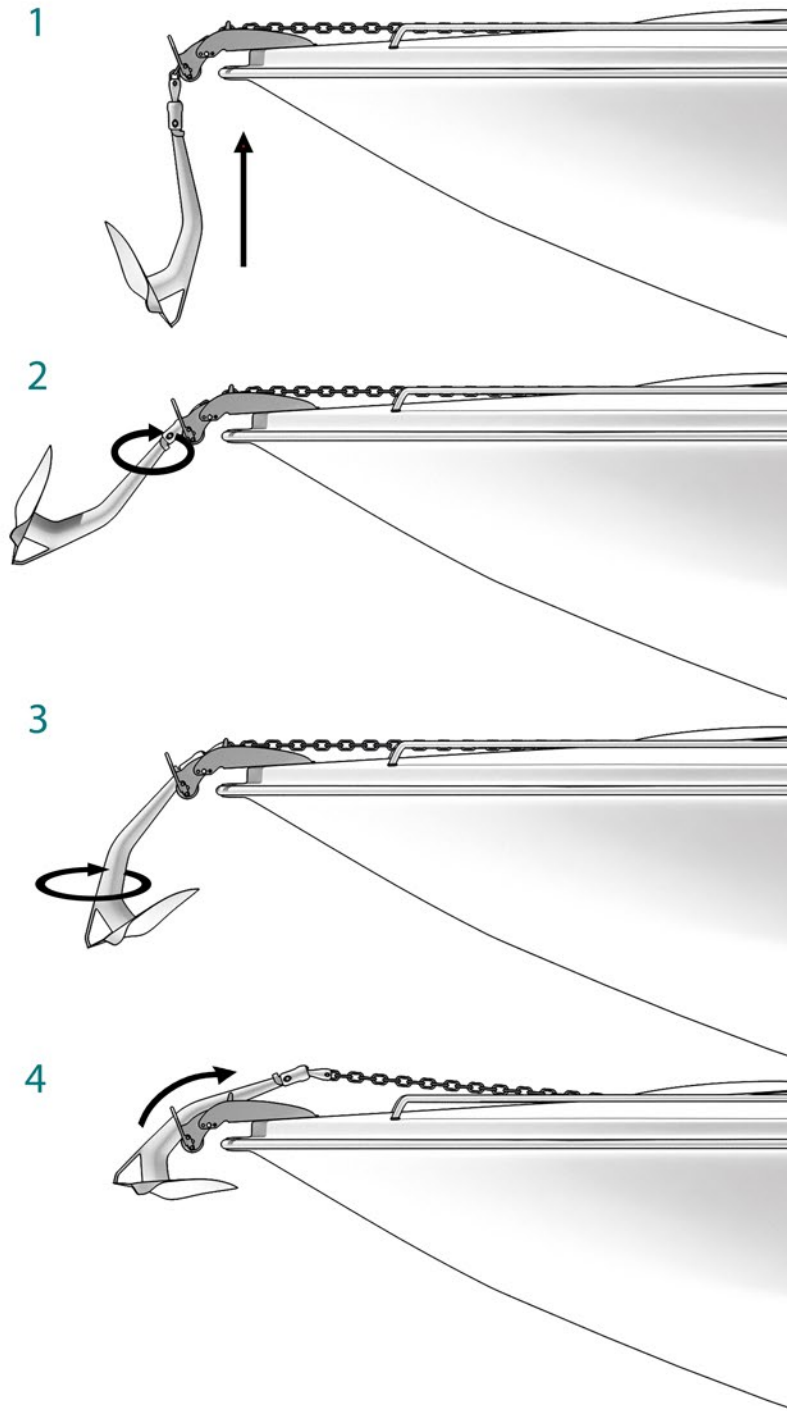
2 - ULTRA Classic Swivel (UCS)

They are suitable for connecting small and light pocket anchors. They don't have a nub and bridge.

3 - ULTRA Roller Bearing Swivel (URS)

They are suitable for connecting heavy pocket anchors. The rotation function of the UCS might be insufficient with the increased friction at heavy loads. We eliminated this problem with the uniquely designed roller bearings resistant to sea conditions.

*Once needed, we can manufacture modified swivels to connect smaller chains than the ones in the selection table. (UMFS, UMCS, UMRS)



Small thing, big difference

REAR BRIDGE

The rear bridge mounts on top of the anchor shank and upon retrieval forces the anchor forward allowing gravity to rotate it.

ROUND CORNERS

All corners are rounded to not damage surrounding surfaces.

ONE PIECE BODY

Fabricated (not cast) one piece body ensures maximum strength. It is suitable to be used with most anchor types.

FLIP NUB

Flipping nub forces anchor off center allowing gravity to rotate it.

ONE PIECE HEAD

Fabricated (not cast) one piece swivel head (which includes the semi spherical ball) ensures maximum strength.

5-YEAR WARRANTY

HEXAGONAL HEAD BOLTS

Hex bolt and retaining screw will not rotate and cannot work loose.

TEFLON* O - RING

Our internal TEFLON* O-Ring stops metal friction occurring when under load providing low resistance and smooth operation.

SELF CLEANING SEMI SPHERICAL BALL

Self-cleaning spherical shape uniformly distributes load to hemispherical connection.

THROAT OPENING

Head is machined to accept chain link.





ULTRA Bow Roller

The ULTRA Bow Rollers are designed and made in Türkiye to face the challenging marine environment, and perform as intended for years to come.

The best results are taken especially by ULTRA Anchor. Each ULTRA Anchor has a different size ULTRA Bow Roller. This way the best harmony is achieved. However, if it is needed, ULTRA Anchors may be used with one size smaller or bigger ULTRA Bow Rollers. The connection holes are left to the user to decide considering the bow rollers location on the boat. However, if the user gives the locations of those holes with the order, they can be manufactured with those holes. The body material is 316L polished stainless steel and its CAR material is 318LN polished stainless steel.

Rollers are made of delrin and do not deform in time, making them work well and making upkeep unnecessary.

The chain hole seen on many old bow rollers is not present on ULTRA Bow Rollers. Using the ULTRA Anchor with the ULTRA Flip Swivel and a quality windlasses with gypsy teeth removes the need of such holes. This way, the negative effect the chain hole has on the alignment of the anchor in the bow roller is prevented. When the ULTRA Anchor is recovered, the delrin roller fits tight into the recovered anchor's body, preventing strain and metal on metal scrapes.

The retaining hoop, which is an inverted-U shape, limits extraneous movement of the anchor, keeps the chain on the roller at all times, and prevents harm to the boat. It also minimizes potential anchor movement while cruising. For best performance, the retaining hoop should fit snug to the anchor.



Check self - explanatory videos on our website
www.ultraproductswest.com



Designed for Ultra Anchor

VIBRATION REDUCER

ULTRA Bow Rollers comes with a vibration reducer to prevent undesirable resonances coming from boat bow.

CAR

318LN polished duplex stainless steel.

CHASSIS

If needed, ULTRA Anchors may be used with one size smaller or bigger ULTRA Bow Rollers. The connection holes are left to the user to decide considering the bow rollers location on the boat.

DELRIN ROLLER

Rollers are made of delrin and do not deform in time, making them work well and making upkeep unnecessary.

RETAINING HOOP

U shaped hoop limits extraneous movement of the anchor, keeps the chain on the roller at all times, and prevents harm to the boat.





ULTRALINE

ULTRA Style Tie!

ULTRALINE Flat Rope Reel is designed and made in Türkiye as a solution for bulky mooring lines, tows, or stern anchor lines, store a significant length of a line in a compact space.

The reel housing is constructed from highly polished 316L stainless steel and is available in various lengths of UV resistant *Dyneema line, ranging from 80-330 feet (40m-100m).

ULTRALINE uses a floating Dyneema line to make it perfect for use as a mooring line while it can still be used as an anchor line.

Line deployment and retrieval are as simple as letting the line payout as needed, then winding it up when done. The flat rope must be cleated off when mooring or anchored as it is not a load-bearing device. The line is self-storing and non-fouling, meaning no more unwanted sea creatures on board. The rope comes with a pre-fabricated stitched eye at one end while the other is fastened to the spool. Also included are a multi-functional winch handle and comprehensive mounting kits.

The ULTRALINE Flat Rope Reel is suitable for standard rail or bulkhead mount installation and comes with a five-year warranty. The appearance is sleek, compact, and an ideal solution for a mooring line. The flat rope's bitter end is attached to the housing with velcro that will release without damaging the rail or bulkhead when it is forced.

Check self - explanatory videos on our website. www.ultraproductswest.com

* Dyneema is a trademark of DSM.

HIGH POLISHED 316L STAINLESS STEEL

The 316L stainless steel casing does not rotate; line rotates inside on hub and does not interfere with nearby equipment.

HOLE GUIDES

Provides guide for length of line deployed and assists that the flat rope to dry quickly.

TWIN ROLLERS

Teflon rollers and stainless steel guides squeeze excess water from flat rope while leading it into the reel.

ROPE GUIDES

Scale indicates approximate amount of line in use.

MULTI FUNCTIONAL WINCH HANDLE

316L multifunctional handle fits a standard winch handle socket and includes three keys for opening deck fittings as well as a shackle buster.

MOUNTING BOLTS

Housing bolts are also incorporated into the mounting system for rail and deck mounted installations.

FLAT ROPE

Flat ropes are UV resistant; will run through 1" sheaves and when folded can fit into the jaws of a self-tailing winch. Flat rope is easily belayed to standard deck cleat.

Selection Table

TYPE #	THICKNESS inch	WIDTH inch	LINE LENGTH feet	REEL DIAMETER inch	BREAKING STRENGTH lbf	WEIGHT lbs
UL-D 40/130	.091"	0.87"	132'	15.35"	7.000	8.4
UL-D 60/200	.091"	0.87"	198'	18.5"	7.000	11.3
UL-D 80/260	.091"	0.87"	263'	21.25"	7.000	16.4
UL-D 100/330	.091"	0.87"	330'	23.62"	7.000	20.3

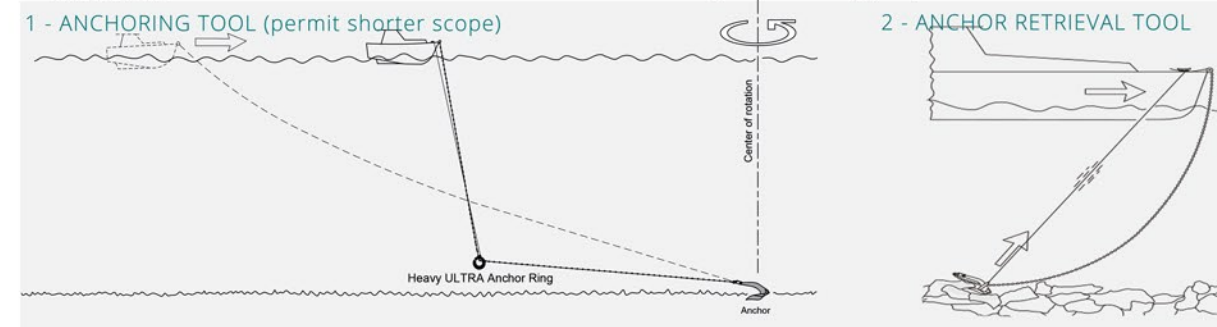
Ultraline



ULTRA Anchor Ring

Design to replace chain or rope weight (Kellet); In case of anchoring with limited scope (busy anchorage or limited anchorage area), ULTRA Anchor Ring increases safety by adding weight to the anchoring system. By adding extra weight on the chain ULTRA Anchor Ring reduces the vessel swing area. ULTRA Anchor Ring works as a shock absorber improving the comfort at the anchor by reducing boat movement.

ULTRA Anchor Ring will be an important recovery tool; This is especially relevant in conditions where entering water is not possible or preferable (such as cold water, rough sea conditions, or the presence of man eating reptiles). In the event you are anchoring in an area known for fouling, always attach a trip line and buoy before deploying the anchor. In circumstances where you are unlucky and get caught on the bottom, using the ULTRA Anchor Ring will assist in your recovery prospects.



ULTRA Chain Grab

General Description :

Manufactured in Türkiye, the ULTRA Chain Grab is a unique design that allows it to be easily attached or removed from a taut chain rode. Manufactured from 316L stainless steel, the chain grab ensures an even load is dispersed over the chain link attached and does not weaken or stretch the link. Another common problem encountered with an all chain rode is the frustrating noise of constant chain whip while at anchor. Rest assured the ULTRA Chain Grab absorbs this load, allowing you and your neighbour an uninterrupted night sleep.

Check self - explanatory videos on our website. www.ultraproductswest.com



Anchor Ring / Chain Grab



Selection Table

TYPE	USABLE ANCHOR (min) - (max)	USABLE CHAIN	INN.DIAM. x OUT. DIAMETER (mm) x (mm)	APPROXIMATE WEIGHT (kg) / (lbs)
UAR 27	5 - 27	Ø06-Ø08-Ø10	138 x 220	8,2 / 18
UAR 45	16 - 45	Ø08-Ø10-Ø12-Ø13	164 x 262	11 / 24
UAR 80	27 - 80	Ø10-Ø12-Ø13-Ø14-Ø16	198 x 310	14,7 / 32

Selection Table

TYPE	CHAIN DIAMETER	
	mm	inch
UCG 06	6	1/4"
UCG 08	8	5/16"
UCG 10	10	3/8"
UCG 13	13	1/2"
UCG 16	16	5/8"
UCG 20	20	3/4"

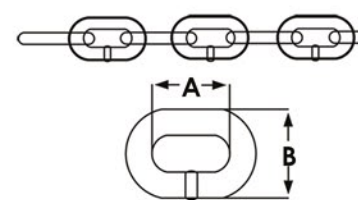


316L Stainless Steel Chain



You will need to find a solution to aid better chain collapse allowing the windlass to work more efficiently. The permanent solution for this problem is to use stainless steel chain. When choosing stainless steel chain, quality is the most important factor. AISI 316L is the preferred choice over 316, if you don't choose "316L" over time you will start to experience problems with the chain welds rusting. We supply German Ketten Walder's, Cromox Grade 60 316L chains.

Dimensions



CHAIN CODE Ø	CHAIN DIAMETER Ø	G43		BREAKING STRENGTH GRADE 60 lbf CROMOX	WEIGHT lbs / feet
		A (mm)	B (mm)		
1/4"	7 mm	21,30	10,70	11.000	0,74
5/16"	9 mm	27,00	11,20	18.700	1,20
3/8"	10,1mm	31,00	14,50	23.100	1,48
1/2"	13 mm	40,40	22,90	34.980	2,55

More information about ULTRA products please visit www.ultraproductswest.com



ULTRA Trip Hook



Manufactured in Türkiye, the ULTRA Trip Hook effectively rescues your anchor when chains or anchors become crossed. Providing fast and safe recovery without the need to take any unnecessary risks. Thanks to its weight, currents and winds don't affect its usage. Made of 316L quality stainless steel.

Dimensions



TYPE	L mm	W mm	T mm	WEIGHT lbs
S (Small)	213	156	12	1,46
B (Big)	380	281	12	5,56



20 years on the market



40 000+ ULTRA Anchor installations



800 lbs available from 11 lbs to 800 lbs

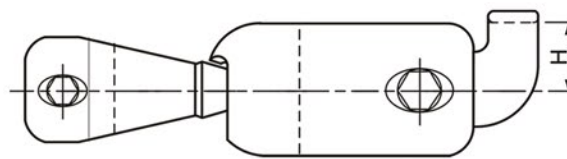


186 ft for boats and yachts up to 186 ft

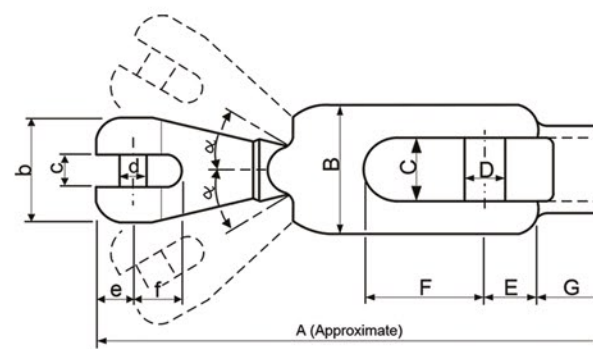


ULTRA Flip Swivel Selection Table

Side View



Top View



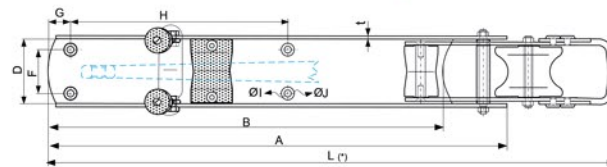
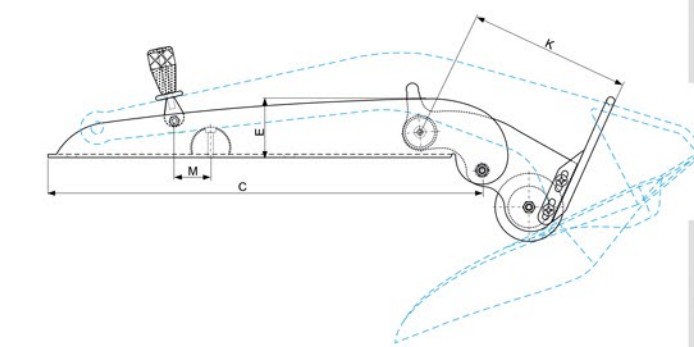
* Tested by RINA (except UFS32 - 600)
 - Safe Working Loads = .5 x Breaking Load.
 - Ultra Flip Swivel selection should be based on maximum anchor weight.
 - Ultra Flip Swivels will accommodate the next size smaller chain, therefore one size larger should be selected for chain such as Grade 70 (G7).
 - Custom Ultra swivels can be manufactured to accommodate smaller chain.
 - When choosing this option, the swivel must be a minimum of 30% stronger than the chain connected and anchor measurements fit the anchor shank.
 - Custom swivels can also be made for symmetrical stockless anchors.

Selection Table

TYPE #	CHAIN DIAMETER		WHOLE LENGTH APPROX. A	CHAIN END DIMENSIONS b - c - d - e - f	ANCHOR END DIMENSIONS B - C - D - E - F	BRIDGE DIMS. G - H	BREAKING LOAD	MAXIMUM ANCHOR WEIGHT		
	mm	inches	inches	inches	inches	inches	kN	lbf	kg	lbs
UFS 6 - 12	6	1/4"	4.76	0.98x0.3x0.28x0.35x0.43	1.38x0.63x0.43x0.52x1.22	0.55x0.67	38.4	8640	12	26
UFS 8 - 21	6	1/4"	5.81	1.18x0.37x0.35x0.43x0.57	1.57x0.75x0.51x0.63x1.44	0.73x0.79	56.7	12740	21	46
	8	5/16"								
UFS 10 - 35	8	5/16"	6.61	1.38x0.46x0.43x0.51x0.67	1.77x0.83x0.57x0.71x1.57	0.83x0.89	90.7	20400	35	77
	10	3/8"								
UFS 13 - 60	10	3/8"	8.33	1.77x0.60x0.57x0.65x0.91	2.17x1.02x0.71x0.91x2.03	1.04x1.18	160.9	36200	60	132
	12	1/2"								
UFS 16 - 110	12	1/2"	9.84	2.09x0.72x0.71x0.79x1.06	2.56x1.22x0.87x1.06x2.32	1.30x1.42	236.5	53200	110	242
	13	5/8"								
	14									
	16									
UFS 20 - 160	18	5/8"	12.17	2.56x0.91x0.87x1.02x1.34	3.35x1.57x1.02x1.26x2.83	1.57x1.59	321.5	72300	200	440
UFS 26 - 360	20	3/4"	14.33	3.35x1.18x1.02x1.30x1.69	4.33x2.05x1.26x1.57x3.03	1.89x2.20	474.8	106700	360	793
	20	3/4"								
	26	1"								
UFS 32 - 600	26	1"	18.70	4.33x1.50x1.26x1.69x2.17	5.51x2.60x1.57x2.05x3.90	2.68x2.36	~726	~163047	600	1320
	32	1 1/4"								



ULTRA Bow Roller Selection Table



COMMENTS :

Dimensions are in inches.

If dimension "A" or "B" is given together with the order by customer, it can be manufactured in different lengths.

The bow roller chassis is either manufactured without holes to avoid potential mounting problems and the holes are drilled by the customer, or it is manufactured with holes, if the dimensions "F,G,H,I,J" are given together with the order by the customer.

Dimensions and details may change without notice.

Selection Table

Anchor kg/lbs	5/11	8/18	12/26	16/35	21/46	27/60	35/77	45/100	60/132	80/176	100/220	130/290	160/350	200/440
A	15.62	18.27	20.91	23.02	25.19	27.4	29.89	32.48	35.75	39.15	42.4	46.26	49.58	53.41
B	13.47	15.76	18.04	19.85	21.72	23.63	25.78	28.02	29.06	33.94	36.96	39.91	42.76	46.07
C	14.74	17.24	19.74	21.73	23.78	25.87	28.22	30.66	33.75	37.14	40.02	43.68	46.8	50.42
D	2.71	2.54	2.91	3.2	3.51	3.81	4.16	4.52	4.98	5.48	5.9	6.44	6.9	7.43
E	1.99	2.33	2.67	2.93	3.21	3.49	3.81	4.14	4.56	5.01	5.4	5.89	6.31	6.8
K	5.56	6.5	7.44	8.19	8.96	9.74	10.63	11.55	12.71	13.99	15.08	16.45	17.63	19
L(*)	21.1	22.56	25.83	28.39	31.1	33.82	36.89	40.08	44.13	48.58	52.32	57.09	61.22	65.94
M	1.22	1.43	1.64	1.80	1.98	2.14	2.34	2.55	2.80	3.09	3.33	3.63	3.89	4.19
t	0.12	0.16	0.16	0.16	0.20	0.20	0.24	0.24	0.24	0.30	0.30	0.30	0.39	0.39