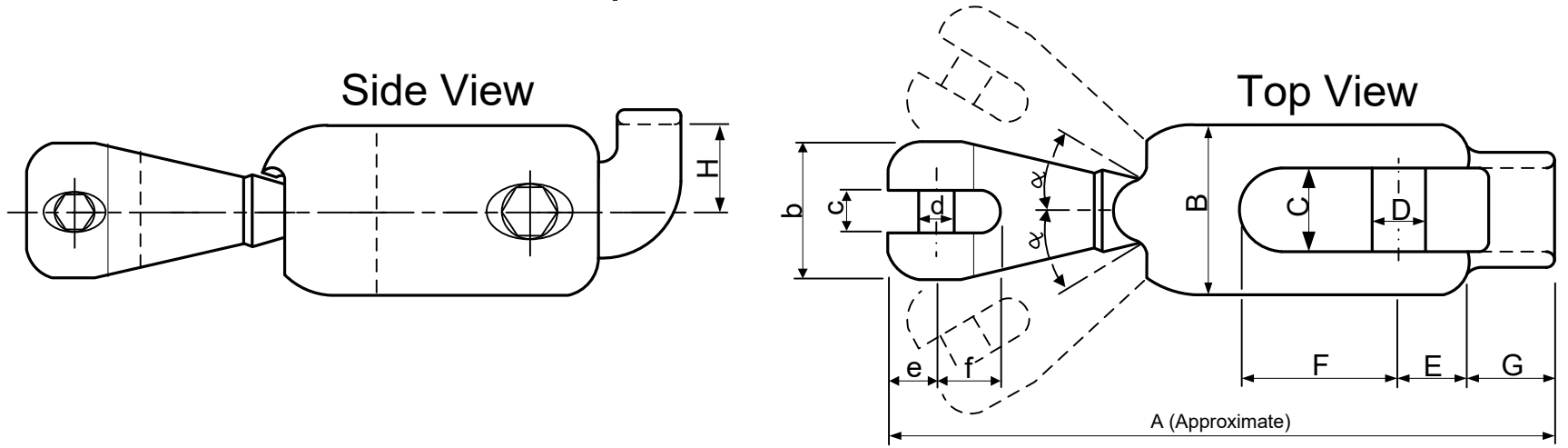


# ULTRA Flip Swivel Selection Table



7.6.2016

Type #	Chain Diameter		Whole Length Approx. mm A	Chain Part Dimensions mm b x c x d x e x f	Anchor Part Dimensions mm B x C x D x E x F	Flipping Bridge Dimensions mm G x H	Breaking Load (*)		Maximum Anchor Weight kg - lbs
	mm	inch					kN	lbf	
UFS 6 - 12	6	1/4"	121	25 x 7,6 x 7 x 9 x 11	35 x 16 x 11 x 13 x 31	14 x 17	38,4	8640	12 - 26
UFS 8 - 21	6	1/4"	147,5	30 x 9,4 x 9 x 11 x 14,5	40 x 19 x 13 x 16 x 36,5	18,5 x 20	56,7	12740	21 - 46
	8	5/16"							
UFS 10 - 35	8	5/16"	168	35 x 11,6 x 11 x 13 x 17	45 x 21 x 14,5 x 18 x 40	21 x 22,5	90,7	20400	35 - 77
	10	3/8"							
UFS 13 - 60	10	3/8"	211,5	45 x 15,2 x 14,5 x 16,5 x 23	55 x 26 x 18 x 23 x 51,5	26,5 x 30	160,9	36200	60 - 132
	12	1/2"							
	13								
UFS 16 - 100	12	1/2"	250	53 x 18,2 x 18 x 20 x 27	65 x 31 x 22 x 27 x 59	33 x 36	236,5	53200	100 - 220
	13	5/8"							
	14								
	16								
UFS 20 - 160	16	5/8"	309	65 x 23 x 22 x 26 x 34	85 x 40 x 26 x 32 x 72	40 x 40,5	321,5	72300	160 - 350
	18	3/4"							
	20								
UFS 26 - 250	20	3/4"	364	85 x 30 x 26 x 33 x 43	110 x 52 x 32 x 40 x 77	48 x 56	474,8	106700	250 - 550
	23	1"							
	26								
UFS 32 - 360	26	1"	475	110 x 38 x 32 x 43 x 55	140 x 66 x 40 x 52 x 99	68 x 60	~726	~163047	360 - 800
	30	1 1/4"							
	32								

(\*) - Tested by RINA (except UFS 32 – 360).

- Safe Working Load = 0,5 x Breaking Load.

- UFS selection should be based on the "Max. Anchor Weight". If the "Max. Anchor Weight" is not enough, one size bigger UFS should be selected.

- One size bigger UFS can also be used with the same chain. Therefore one size bigger swivel should be selected for chains such as Grade 70 (G7).

- Custom swivels without the flipping bridge and flipping nub could also be made for symmetrical stockless anchors.

- When choosing this option, the swivel must be a minimum of 30% stronger than the chain connected and anchor end measurements fit the anchor shank.

- ULTRA Flip Swivels can be fabricated to fit chain size smaller than standard.